



ANIHEATER®

The new generation of heating lamps

INSTALLATION GUIDE



UNITED STATES PATENT



Europäisches Patentamt
European Patent Office
Office européen des brevets

DESCRIPTION

ANIHEATER®

100%
MAINTENANCE
FREE

EU 220 – 240 V
Canada/USA 110 – 120 V

Consumption	100W - or 150W
Connection	Select the plug/connector suitable for your stable
Set content	Aniheater installation template
Ambient temperatures	- 10/+25 degrees
IP Class	IPX9K

Advantages of Aniheater®

- **Reducing energy**

Reducing energy consumption in the stables by up to 50% when combined with dual control

- **Even distribution of heat**

Providing more even distribution of heat than traditional heat lamps. This ensures better food intake and higher survival rates among piglets as well as reduces the use of medicine.

- **Waterproof 4X Approved**

Being easy to clean and maintain. To clean the Aniheater®, you simply use a high pressure cleaner, which means you do not have to remove it. This also helps maintain a high hygiene level.

100%
WATERPROOF

- **Long lifetime**

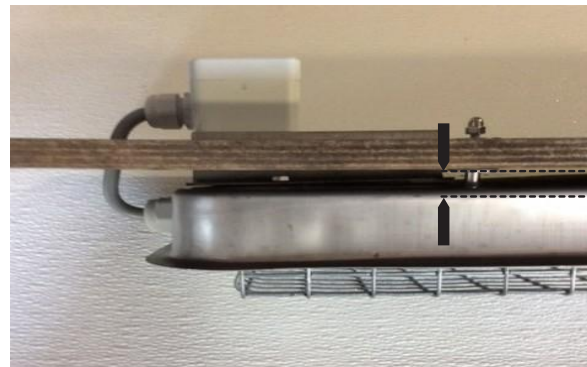
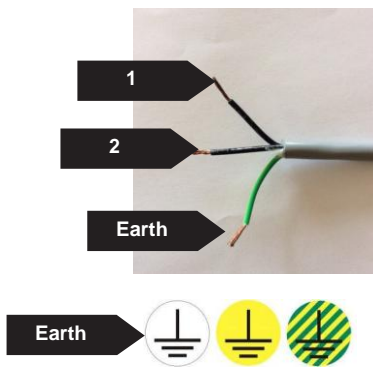
Aniheater® does not use incandescent light bulbs like traditional heat lamps. 1 year warranty.

- **Low fire risk:**

Aniheater® work at a lower temperature than traditional heat lamps which reduces the risk of fire.

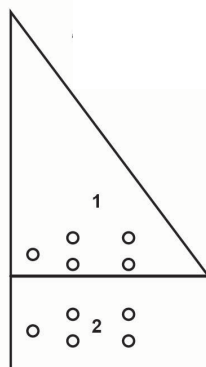


PREPARATION / FIND TEMPLATE IN THE PACKET

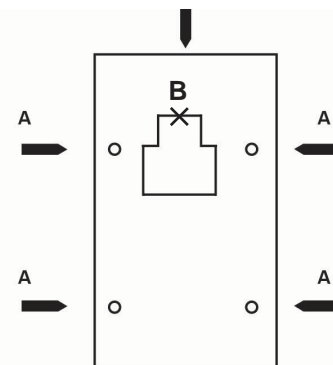


Power connection must be made by authorized electrician, according to the rules

TOP



TEMPLATE



Aniheater can be mounted on wood or plastic.

Aniheater shall be installed in accordance with the requirements in the National Electrical Code (NEC), ANSI/NFPA 70, and the Canadian Electrical Code (CEC).

Depending on where you want to place ANIHEATER® use placement (1 or 2)

Depending on stable equipment type, if you want to place ANIHEATER® on the triangular lit, select placement (1)

If housing inventory is already prepared for ANIHEATER® This point can be skip ped. If you want to place ANIHEATER® on the inside square, select placement (2)

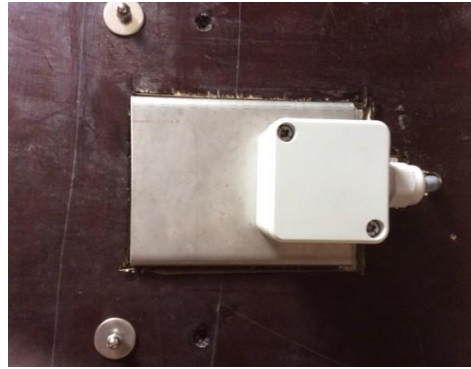
Before assembly

Make sure that the lid can be opened and closed after ANIHEATER® is mounted, and make sure that the safety distance to floor and flammable material remains in compliance with applicable laws and requirements in this manual.

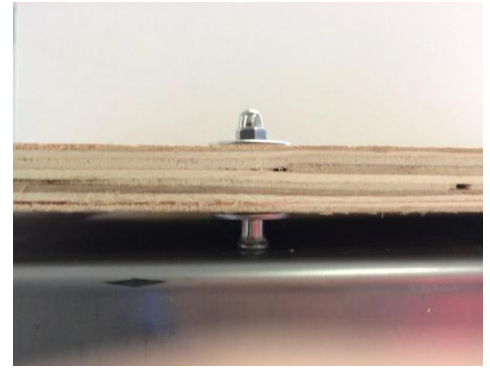
Warning! Before drilling, you must be check that there are no pipes, fittings, or anything else in the way of the drilling.



A



B



C

Electricity and controls must be installed by an authorized electrician installer, ANIHEATER® has to be connected to ground/earth wire.

How to install ANIHEATER®: Look video

<http://www.aniheater.futurefarming.dk/monterings-vejledning/>

- Minimum 15,7 inch above the floor, and with Minimum 15,7 inch. distance to flammable material
- The holes on the template marked with A be drilled with a 0,236 inch drill (4 piece). (Follow each order of Aniheater).
- The holes on the template marked with B be drilled with a 0,39 inch drill, cut out after the template with a stick saw. (This hole is for the wire) and the box.
- Turn the 4 bolts sitting on Aniheater halfway through
- ANIHEATER® lays down into the cave under the drilled holes. ANIHEATER® have the wire net protection towards the floor, and the bolts with one metal disk on either side up. **Look at the photo A + B.**
- The Box goes up into the hole (B). The Box is tightened to the heater panel, using the screw's provided.
- The opening in the wiring compartment(outlet box) shall be connected to ½ inch UL/cUL Listed liquid tight conduit and conduit fittings for assembly to the supply connection.
- So the 4 bolts are hitting the 4 drilled holes (A) on the inside of the lid.
- When the bolts have come up through, you put one metal disk on each bolt. Place a nut on each of the 4 bolts and turn them to the end. **Look photo C.** Each nut is tightened with a 2,76 inch wrench.
OBS !!! Do you use an electric buckle - do not tighten to much !!!

USER GUIDE

ANIHEATER®

Application

“For indoor use only”.

- When ANIHEATER® is plugged in, check if ANIHEATER® is functioning correctly, by feeling with one hand on the wire net protection.
- WARNING! Do not reach under the wire net protection, risk of burns.
”CAUTION” and the following ”Do not use this product unless the guard is in place.”
- ANIHEATER® turned off by disconnecting the power
“WARNING“- Do not install over combustibile materials at a height less than 40 cm (15.7 inches) or equivalent.



The heater must not be touched when power is on.



Wait 30 minutes after the lamp is turned off before touching ANIHEATER®



Do not place flammable materials within 15,7 inch distance from ANIHEATER®.

MAINTENANCE

Maintenance of ANIHEATER®

Maintenance

ANIHEATER® is 100% waterproof (4X) and is able to resist the power of a pressure washing. It is therefore not necessary to remove the ANIHEATER® when cleaning, which saves a lot of time in the stable.

WARNING! Wait 30 min. before cleaning or repairing ANIHEATER®

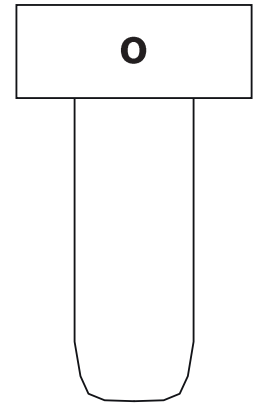
- Before the repair and maintenance of ANIHEATER®, ensure that the power is off and the lamp has had a cooling time at least 30 minutes.
- ANIHEATER® is in 4 parts - Wire net protection - heater with electric wire and plastic block - Dish and lamp housing. All parts can be replaced.
- ANIHEATER® should not be used if ANIHEATER® have got injuries that have left cracks / holes in ANIHEATER® / electric wire / connector / heater.
- Inspect ANIHEATER® for damage regularly, however at least every six months.

GUARANTEE ANIHEATER®

**If the fault is within the warranty period, please contact your dealer.
1 year functionality warranty on ANIHEATER®, under normal use -
though not for any kind of bite in the wire.**

REPLACEMENT OF HEATER.

ANIHEATER®



- ANIHEATER® disconnected from power. We recommend a qualified electrician to do it.
- Wait 30 minutes for the heater is cold.
- Loosen the wire net protection on ANIHEATER® on one side, for example with a plier.
- Loosen the two lock nuts in plastic block, and remove them for example using a ratchet wrench (2,76 inch), also the 2 metal discs removed.
- Electric wiring is loosened
- The 2 bolts pressed / screwed out.
- Now you can move the heater out.
- New heating element is inserted, by first inserting the wire (O must face up.) and the heater pulled up in place.
- Then insert bolts, metal discs and lock nuts. The lock nut is tightened for. example with a ratchet wrench 2,76 inch.



**FUTURE
FARMING**

+45 29 42 43 89

Kurt@futurefarming.dk | www.futurefarming.dk
Guldagervej 11, 6670 Holsted DK